

In Loving Remembrance of
ROBERT WADHAM,
WHO DIED NOVEMBER 23rd, 1880,
AGED 32 YEARS.

OH! IS HE GONE WHOM WE SO DEARLY LOVED,
WHOSE TENDER KINDNESS WE SO OFTEN PROVED?
OH, YES! HE'S GONE, HIS HAPPY SPIRIT'S FLED,
AND NOW HE'S NUMBERED WITH THE SILENT DEAD.

Zetetic Books
Conor Pattenden
46 Meadow Road
Berkhamsted
HP4 1EB
UK
07545 474868

www.zeteticbooks.com
books@zeteticbooks.com

- ◆ Postage is extra, please email or telephone if you would like a quote before ordering. All items are insured
- ◆ All books have been collated and are complete unless otherwise noted – however we are not infallible – any book found to be incomplete, or unwanted for any other reason may be returned for a full refund, but please let us know first
- ◆ Payment can be made by cheque (drawn on a UK bank and made payable to Zetetic Books), or by Paypal at the above email address, or by bank transfer (details upon request)
- ◆ Digital images are available for every item. The bulletin is also available as a PDF if preferred
- ◆ If you know of anyone who might like a copy of this or any of our other catalogues, or if you would like to be added to our mailing list, please let us know. Conversely, if you receive a catalogue or bulletin and do not want to receive any more, we would be grateful if you could send a quick email and we will remove you from the mailing list
- ◆ You can get advance notice of printed catalogues and bulletins by joining our email list on the front page at www.zeteticbooks.com, where all recent acquisitions are listed before appearing on any other websites. We would encourage you to do so as items often sell before appearing elsewhere.

Bulletin IX – Ephemera - March 2017

Cover art adapted from item 05

[05] [Funeralia]. A Collection of Memorial Cards. Various, First Edition. Various. Unbound. Ephemera. Good+. c. 97 memorial cards, including three framed and glazed, dated mainly between 1860 and 1910. Designs include several embossed 'pierced lace' designs, through to later printed and chromolithographic cards. Included amongst many others is a remembrance card for Prince Albert (1861 - picture taken against a black background to show the pierced design), a funeral ticket for the Duchess of Norfolk (1877) and an attractive folding card in its original black bordered envelope (1907). "The memorial card relied for much of its appeal on the austere extravagance of blind embossing. The process produced an uncoloured relief image of some delicacy ... exploited here for its portrayal of sepulchral and monumental images. Tombs, funerary urns, angels and mourning figures appeared as though in marble low-relief ... Embossed cards were also available as pierced 'lace' designs, the low-relief effect being enhanced by removal of the background ... In a further elaboration, cards might be mounted on larger 'frame' cards. These were similarly treated with low-relief and lace effect and were designed to be mounted on a black background for glazing and framing ... In the final decades of the 19th century and on into the 20th century the most common form of mourning card was chromolithographed (usually in a range of grey or sepia colours and with a black border) for overprinting by the local printer" (Rickards - The Encyclopedia of Ephemera, page 157) [001933] **£275.00**





[06] [Invoice and Receipt for Drapery]. **Bought of John Cooper and Co. Linen Drapers to the Royal Family, No. 113 New Bond Street.** London: No Publisher, 1810. First Edition. 16mo (Oblong). Unbound. Receipt. Good. Single sided, part printed part manuscript invoice with attached receipt. Slightly creased from old folds, minor wear to edges. Made out to Batt Esq. and dated March 12, 1810, the receipt is for a 7/4 curious ?Indian Shawl at 23 guineas and 3 ?sash topkets. Attached is the receipt signed by A. Spearman for John Cooper, with a blind stamp [001918] **£35.00**



[07] [Invoice and Receipt for Glass]. **Mr Pittom to Crooke and Son, Invoice for Glass, October 1830.** No Place: No Publisher, 1830. First Edition. 24mo (Oblong). Unbound. Receipt / Invoice. Good. Manuscript invoice and receipt for a variety of glass, approximately 170mm x 140mm in size. Minor browning and slight creasing, two stab holes to centre, catching one word with loss of sense, otherwise quite bright and clean. Dated October 1830, an invoice to Mr Pittom from Crooke and Son for a variety of glass, including crown glass, common glass and leaded glass with a little more common glass a month later, with the bill signed as settled by Crooke in February of the next year [001927] **£20.00**



[08] [Invoice for Drapery]. **Bought of ?F. Taylor. Linen Draper, Haberdasher, Hosier Etc. Wholesale and Retail.** Manchester: No Publisher, 1818. First Edition. Folio. Unbound. Receipt / Invoice. Good. Part printed part manuscript invoice for drapery. Creased from old folds, slightly browned, a couple of small holes and tears to creases, but generally fairly bright. Made out to Ms. Davenport and dated June 24 1818, for a large order of various items over a period of time, including silk shawls, handkerchiefs, ribbons and a bonnet, coming to a total (on the reverse), of £43, 7s, 7d. The address is given as 16 St. Anns Square. The invoice notes 'Funerals Furnished' and they are an 'Importer of Irish Linens. For Ready Money Only' [001919] **£30.00**



[09] [Invoice for the Maintenance of a Lunatic]. **Brislington House Invoice to Rev'd Peter Johnson for the Maintenance of His Brother.** No Place: No Publisher, 1834. First Edition. 4to. Unbound. Receipt / Invoice. Good. Part printed, part manuscript bill for the upkeep of a patient at Brislington House, a private lunatic asylum. Creased from old folds, small amount of loss to letter part of the document affecting one word, with a repair where the document has been opened and damaged by the seal, minor browning, but generally fairly bright. The letter part is written by Francis Ker Fox (the son of Edward), and notes that the patient's "mind still dwells upon the same topics as those with which you are already familiar, but although upon these points he is nearly incoherent, there is reason to believe that the imperfections which are conveyed to his ?mind are generally of an agreeable description". Brislington House was opened by Edward Long Fox in 1806 and it was one of the earliest

purpose built asylums in England. The patients were divided by social class, with "'1st', '2nd' and '3rd' class ladies and gentlemen, who were housed in different blocks, as well as behavioural presentation ... In addition to the wealthy private patients, paupers funded by parish funds were also admitted and kept in accommodation furthest from the central block, which was for the highest in society ... By 1844 there were 60 private patients" (Wikipedia). The total of the half-yearly sum for upkeep noted here is a not inconsiderable £192, 9s, 2d [001921] **£45.00**



[10] [Merchant Seaman's Orphan Asylum Election Card]. The Favour of Your Votes and Interest is Most Earnestly Solicited on Behalf of Kate Annie Hart Aged Seven Years.

London: No Publisher, First Edition. 48mo (Oblong). Unbound. Ephemera. Good. Printed, single sided election card for the Merchant Seaman's Orphan Asylum, n.d. c.1875?

approximately 115mm x 80mm in size. Two puncture holes to edges (now closed), but with some associated creasing and small amount of surface loss, but not affecting sense, lightly browned, with a couple of small spots of blue ink, otherwise quite bright. For the upkeep of Kate, 'whose Father Died of Consumption, leaving a Widow and Three children totally

unprovided for. The Mother is unable to provide for them in any way owing to her present condition, and earnestly solicits your energetic support'. The Merchant Seaman's Orphan Asylum was founded in 1827 and its aims were to 'afford relief to the orphans of seamen in the Merchant Service by providing for them clothing, education and maintenance, and by assisting to place them, on leaving the Asylum, in situations where an honest livelihood may be secured'. The first named Reverend strongly recommending this case was Rev. A.[rchibald] G.[eikie] Brown of the East London Tabernacle, who was a friend and associate of Charles Spurgeon. The East London Tabernacle was established in 1872 [001924] **£60.00**

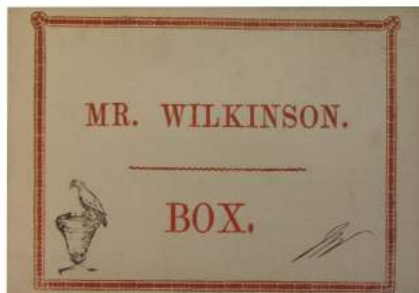


[11] [Receipt for Candles]. **Bought of John Holland and Son, Wax and Tallow Chandlers, To His Royal Highness the Prince of Wales. No. 52, South Audley Street, Grosvenor Square.** London: No Publisher, 1810. First Edition. 32mo (Oblong). Unbound. Receipt / Invoice. Good+. Single sided, part printed part manuscript receipt, approximately 210mm x 115mm in size. Lightly creased from old folds, otherwise quite bright and clean. Made out to Batt Esq. and dated 8 May, 1810, the receipt is for two ?dozen best wax candles. Noted 'Paid' and initialled by John Holland to foot. The receipt also advertises 'Fine Wax, Spermaceti, Mould & Store Candles', as

well as 'Soap, Starch & Blues' [001917] **£30.00**



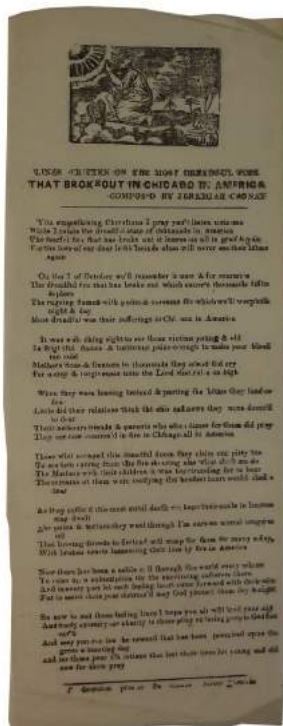
[12] [School Advertisement Ticket]. **At Mary Archer Jefferson's School, Castlegate, Cockermouth, Are Taught the English and French Languages.** No Place: No Publisher, First Edition. 32mo (Oblong). Unbound. Ticket. Good. Advertisement ticket for Mary Archer Jefferson's school, approximately 115mm x 105mm in size, n.d. c.1830. Slightly crinkled, but otherwise clean. Advertisement for a ladies boarding school in the Lake District where they could learn English, French, writing, arithmetic, geography and the use of globes, the delineation of maps, the elements of astronomy as well as 'plain and fancy needle work'. The school is listed in Pigots Directory for 1828-9, located in St. Helens Street, by 1831 the fees were £30 per annum [001932] **£45.00**



[13] [Theatre Ticket]. **Mr Wilkinson - Box.** No Place: No Publisher, First Edition. 64mo (Oblong). Unbound. Ticket. Good+. Theatre ticket, approximately 90mm x 65mm in size, n.d. c.1810? Very slightly browned, otherwise clean. Printed in red and black, with initials to bottom right hand corner. Attractive piece of printing, but unfortunately I haven't been able to trace any further information about it [001931] **£40.00**



[14] [Writing Desk Label]. **JAs Middleton, Portable Writing Desk and Dressing Box Manufacturer.** London: No Publisher, First Edition. 64mo (Oblong). Unbound. Label. Good Label from a portable writing desk, approximately 60mm x 45mm in size with cropped corners, n.d. c.1820? Browned, slightly rubbed, otherwise fairly clean. Middleton also made work boxes, soufflets (bellows), reticules (small handbags) and pocket books, the label also advertises 'black lead pencils of different degrees of hardness' and 'portable and counting house letter copying machines' [001929] **£25.00**



[15] Cronan, Jeremiah. Lines Written on the Most Dreadful Fire That Brokeout in Chicago in America. Dublin: P. Brereton, . First Edition. 4to. Unbound. Broadside. Good. Single sided printed poem, approximately 105mm x 285mm in size, n.d. but 1871. Creased to edges, tiny tear to foot, otherwise quite bright and clean. Poorly printed, with several missing letters. The 'Great Chicago Fire' , October 8th -10th, 1871, (though dated the 7th in this poem), killed an estimated 300 people and caused an estimated 200 million dollars worth of damage. It was quickly blamed on an Irish immigrant, Catherine O'Leary, and her cow,"perpetuating ethnic stereotypes and underscoring nativist fears about the city's growing immigrant population", (Smithsonian.com). Both were exonerated in 1997. A copy of the poem is in the Bradshaw Collection [001925] **£45.00**

[16] Le Neve, Ethel. Ethel Le Neve - Her Life Story - With the True Account of Their Flight and Her Friendship for Dr. Crippen - Also Startling Particulars of Her Life at Hilldrop Crescent. Manchester: The Daisy Bank Printing and Publishing Co., Reprint. 12mo. Card Covers. Pamphlet. Good. 64pp, n.d. c.1910. Original card covers. Staples slightly rusted, pages browned, with a few creases and occasional chipped corners, but generally clean. With ten full page illustrations [001923] **£40.00**

